

## Useful information about Brunata Future Signal

### Congratulations on your new Brunata Futura Signal pulse collector!

This leaflet provides information about the electronic pulse collector Futura Signal. It also contains information about how to save water – for the benefit of the environment and your finances.

### Pulse collection

Brunata Futura Signal is used to collect meter data (pulses) from up to four meters (pulse providers), typically water meters, heating meters and electricity meters. The meters are connected to separate input channels on the pulse collector. Futura Signal is therefore an add-on to your meters, which allows the consumption to be read and can be used in the following situations:

- If the meters are not furnished with a radio.
- If the meters are located in a position where the display cannot be read.

### Components

Brunata Futura comprises two parts:

- A cabinet with the pulse collector itself.
- Possibly a collection box, to which the cables from the various consumption meters are connected.

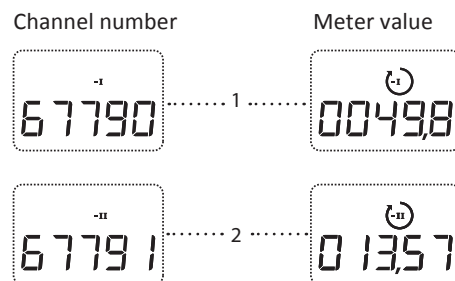
### Network

Brunata Futura Signal can be used in systems where data are transmitted to Brunata-Net. In this case, the pulse collector is part of the total registration of the property's consumption. The network allows early warning of unusual consumption or malfunctions.

### Reader-friendly display

It is easy to see your consumption on Brunata Futura Signal. It alternately shows the consumption for the connected meters' meter number and meter status.

Channel 1 is always the lowest channel number, as illustrated below.



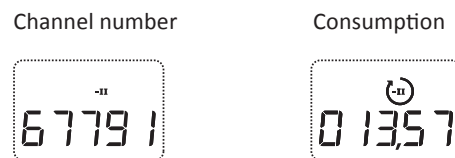
### Example at your home

If a hot water meter and a cold water meter are connected to your pulse collector, the display on the pulse collector will look as shown below.

Hot water meter:



Cold water meter:



- The five digit figure (-**I**) indicates the channel number for hot water.
- Afterward you will see the meter value/ consumption for hot water, in this case 49.8 m<sup>3</sup>.
- The five digit figure (-**II**) indicates the channel number for cold water.
- Afterward you will see the meter value/ consumption for cold water, in this case 13.57 m<sup>3</sup>.

### Data saved in the memory

The values from the 1<sup>st</sup> and 15<sup>th</sup> of every month are saved in the pulse collector's memory. In total, data are saved for 52 log periods, corresponding to 26 months. The saved data are the registrations for the period for each channel.

The meter status at the end of the year is saved in the meter memory for ten years.

One advantage of the memory function is that it is not necessary to read the meter on a particular day in connection with removals.

If Brunata Futura Signal is exposed to attempts of manipulation or other interference, this is also registered in the memory with an indication of date and time.

The pulse connector's registrations are checked in connection with the annual reading and when residents move into or out of a flat.

### Advantages of the meter memory

Due to the many saved registrations, it is also possible to assess whether unusual energy consumption is caused by bad user habits.

### Use water sensibly

Get the most out of the warm water and use it carefully:

- Use a bowl when washing up and turn off the tap.
- Rinse vegetables in a bowl.
- Do not defrost frozen food under running water.
- Have showers rather than baths; this can easily save 100 litres of water each time.
- Keep showers short.
- Turn off the water while soaping the body.
- Install a fitting with thermostat and water-saving shower head.
- Fit an aerator on the tap; it mixes the water with air and thereby saves water.

### If consumption is registered even though the water is turned off

If Brunata Futura Signal registers units even though the water is turned off, this may be due to a leaking pipe. In this way, the pulse collector can draw attention to faults and other issues in the water system.

**Brunata a/s**  
 Vesterlundvej 14  
 2730 Herlev  
 Tlf. 77 77 70 00  
 brunata@brunata.com

You can read more about Brunata's products and services at [www.brunata.dk](http://www.brunata.dk) or by using the QR code.



Read your own consumption by looking at the meter display:

Monitor your consumption: Carry out your own control readings by using the form below

Meter type	SOwn reading – channel 1	Own reading – channel 2	Own reading – channel 3
Date			

EN-QB 10.1428/23.02.2016

# Brunata

## Futura Signal



Brunata's electronic pulse collector

Please state system number when contacting Brunata

# Brunata

## Futura Signal



Brunatas elektroniske pulsopsamler