

# Useful information about Brunata Futura Signal+

## Congratulations with your new Brunata Futura Signal+ pulse counter!

This leaflet tells you about the electronic pulse counter, the type of meter which we just have fitted on your water installation. The leaflet also contains information about how to reduce your water consumption – for the benefit of the environment and your budget.

## Pulse Counter

Brunata Futura Signal+ is a pulse counter; and is part of the total recording of consumption in a building. It records data (pulses) from up to 4 meters, typically water-meters, electric-meter and calorimeter/radiator meter etc. It does not necessary have to be meters of the same type. Each meter is connected with the pulse counter at separate channels.

## Components

Brunata Futura Signal+ consists of two main components:

- A cabinet containing the pulse counting device itself.
- A connection box to which the cables from the consumption meters are connected.

## Network

Brunata Futura Signal+ is applicable in systems transferring data to the BrunataNet. In this case the pulse counter is part of the total recording of consumption in a building. The network ensures an early warning in cases of abnormal consumption or error functions.

## Stand-alone remote counter

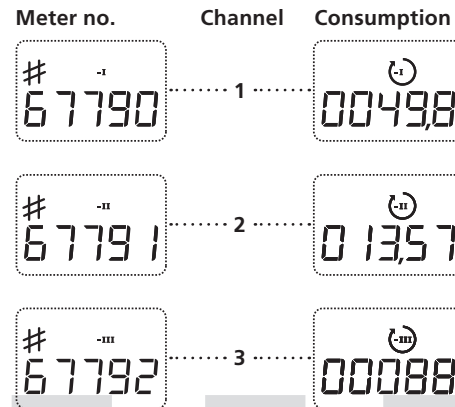
For meters to which access is difficult the pulse counter can be used as a stand-alone remote counter. A handheld computer ensures a safe and quick reading.

## Programming

Brunata Futura Signal+ must always be programmed so it complies with the consumption meters connected. As standard, programming is carried out during the installation by means of a handheld computer. However, ordering a pre-programmed pulse counter is also possible.

## Easy-to-read display

Brunata Futura Signal+ has an 'easy-to-read' display. The display of the pulse counter alternates between meter number and consumption (max. 4 meters). Please see illustration below:



Meter no. comprises the three unique channel numbers.

## An example

If a hot-water allocator and a cold-water allocator are connected to the pulse counter, the display will show:

### Hot water allocator



Channel no.



Consumption

### Cold water allocator



Channel no.



Consumption

- The 5-ciphered number (-I) shows channel number for hot water allocator.
- Hereafter is hot water consumption shown, which is 49,8 m<sup>3</sup> in this example.
- The 5-ciphered number (-II) shows channel number for cold water allocator.
- Hereafter is cold water consumption shown, which is 13,57 m<sup>3</sup> in this example.

## Data stored in the memory

Values for the 1st and 15th of every month are stored in the meter's memory. In total, data for 52 log periods are stored, corresponding to data for 26 months.

The annual heat consumption is stored in the allocator's memory for ten years.

If Brunata Futura Signal+ is exposed to attempts at tampering or other damage, this is also recorded in the memory together with information on date and time.

The allocator recordings are checked in connection with the annual reading and when residents are moving in or out. The many stored measurements also make it possible to evaluate if exceptional energy consumption is caused by bad consumer habits, failures in the heating system or inadequate insulation of the building.

## Use water with consideration

Use water with consideration for the environment:

- Turn off the water when you are doing the dishes. Use a washing-up bowl.
- Rinse the vegetables in a bowl.
- Do not defrost food under running water.
- Use the shower instead of the bath top. You can easily save approx. 100 l. per bath.
- Take short showers.
- Turn off water when you soap.
- Install a mixing fitting with a thermostat and a water reducing showerhead.
- Install a perlator in the taps. It mixes air into the water, thus saving water.

If the Brunata Futura Signal+ registers units even though the water is turned off, this may be due to a leaky pipe. In this way, the pulse counter can help pinpoint faults and inexpediences in the water-consumption system.

## Where to find us:

### Main Office

- Vesterlundvej 14  
Postbox 545  
DK- 2730 Herlev  
Denmark  
Tel. +45 77 77 70 00  
Fax +45 77 77 70 01  
www.brunata.com  
brunata@brunata.com

# Brunata Futura Signal+

Brunata's electronic  
pulse counter



Read your own consumption by looking  
at the pulse counters display.

Monitor your consumption.  
Record your own control readings in the form below.

Type of allocator	Consumption · channel no. 1	Consumption · channel no. 2	Consumption · channel no. 3	Consumption · channel no. 4
Date.				

UK-QB 10.1428/14.12.2010

# Brunata

## User Information

Information about  
Brunata's electronic  
pulse counter



# Brunata Futura Signal+

Version 2 (3.9)

Please state plant id when contacting us